



the **dedet**

Department:
Economic Development, Environment and Tourism
MPUMALANGA PROVINCIAL GOVERNMENT



COMPREHENSIVE ECONOMIC DEVELOPMENT SERVICES 2012



Building No 4, No 7 Government Boulevard
Riverside Park Ext 2, Nelspruit, 1201
www.mpumalanga.gov.za/dedet

contents

Integrated Economic Development	Pg 4
Trade & Investment Promotion	Pg 5
Business Regulations & Governance	Pg 6
Economic Planning	Pg 7
Environmental Services	Pg 8 - 11
The Liquor Board	Pg 12
Consumer Affairs Court	Pg 13
National Consumer Commission	Pg 14
The National Credit Regulator	Pg 15
Mpumalanga Economic Growth Agency	Pg 16
Mpumalanga Tourism And Parks Agency	Pg 17
Mpumalanga Gambling Board	Pg 18
Industrial Development Corporations	Pg 19
Small Enterprise Finance Agency	Pg 20 - 21
National Youth Development Agency	Pg 22
National Empowerment Fund	Pg 23
Small Enterprise Development Agency	Pg 24
The Jobs Fund	Pg 25
Companies & Intellectual Property Commission	Pg 26





Mr Norman Mokoena, MPL
MEC: Economic Development,
Environment and Tourism

MEC's Foreword

The economic success and sustenance of many economies is anchored around increased participation of SMME's in the mainstream economy. SMME's are principal driving forces of economic growth and development. As the Provincial government, we are resolute in increasing the uptake of SMME's as their dynamism and the ability to innovate will assist us in creating the much needed jobs in our economy. They are critical in generating employment and they also help diversify economic activity and make a significant contribution to exports and trade.

This Grocery Booklet is being presented at a time when we are in our mid-term which is characterised by both successes and systematic challenges that are a legacy of our past in particular the apartheid space economy. This legacy continues to manifest itself as many SMMEs are not connected to the mainstream economy and this remains a challenge to government's efforts of creating interconnected business activities that will usher in the creation of value chains across sectors.

The creation of value chains across sectors is critical as it connects SMMEs and big corporations in the production of a plethora of goods and services. This is the revolution that we are leading as the Department of Economic Development, Environment and Tourism, as we are conscious that SMME's are a vehicle of ensuring economic inclusivity and increased participation by SA in the mainstream economy.

The primary agenda of any country that is geared towards developmentalism such as South Africa is the creation of a vibrant private sector, the development of entrepreneurship and creation of SMME's. SMME's stimulate private ownership and entrepreneurial skills, as they are flexible and can adapt quickly to changing market demand and supply situations.

I am delighted to present the Grocery Booklet to our SMMEs and Co-operatives with the hope that it will assist them access services that my department and our stakeholders are offering.

I thank you.

INTEGRATED ECONOMIC DEVELOPMENT

Directorate: Enterprise Development

Service Offerings:

- Advise and support potential entrepreneurs to establish business
- Facilitate establishment of cooperatives
- Develop and support SMME's and cooperatives
- Conduct entrepreneur programmes for target groups (youth, women & people with disability)
- Assist SMME's and Cooperatives access funds
- Capacitate cooperatives to comply with Cooperatives Legislation Regulations
- Advocate for SMME's to access procurement opportunities within provincial department

For more information Contact:

Tel: 013 766 4378 / 4482
 Fax: 013 766 4614
 E-mail: masekop@mpg.gov.za /
 Amvila@mpg.gov.za

Registration of Cooperatives

For more information Contact

Mr W Makaringe
 Tel: 013 766 4849
 50 Murray Street
 Nelspruit
 1200

Directorate: Economic Empowerment

Service Offerings:

- Link empowerment groups to large corporations
- Monitor compliance to BBBEE by corporations

For more information Contact:

Tel: 013 766 4554 / 4472
 Fax: 013 766 4614
 E-mail: iserakalala@mpg.gov.za /
 JESibanyoni@mpg.gov.za

Directorate: Local Economic development

Service Offerings:

- Develop, support and review LED plans
- Provide strategic economic development support to municipalities
- Develop investment incentive strategies in districts

For more information Contact

Tel: 013 766 4327
 Fax: 013 766 4614
 E-mail: SMohlala@mpg.gov.za



TRADE & SECTOR DEVELOPMENT

Directorate: Trade & Investment Promotion

Service offerings:

- Develop Export Strategy.
- Provide information, advice on export trade opportunities and export awareness campaigns.
- Monitor the value of exports and investment through the implementation of the Export and Investment Strategies.
- Implementation of Bilateral Trade and Investment Initiatives
- Facilitate the participation of emerging exporters in trade shows and trade missions in collaboration with the Mpumalanga Economic Growth Agency.
- Assist companies to register as exporters/importers.
- Assist in preparations for international fairs as request by the Dti.
- Review of Mpumalanga Investment Strategy.

For more information Contact:

Head Office

Mr BA Matsane

Tel: 013 766 4531

Cell: 072 751 9617

E-mail: bamatsane@mpg.gov.za

Ehlanzeni Regional Office

Mr. SW Dlamini

Tel: 013 766 4806

Cell: 072 705 7592

E-mail: WisemanD@mpg.gov.za

Gert Sibande Regional Office

Ms. T Marwala

Tel: 017 811 3944

Cell: 083 925 1687

E-mail: TMuthige@mpg.gov.za

Directorate: Strategic Initiative

Service Offerings:

- Support infrastructure projects

For more information Contact:

Tel: 013 766 4181

Fax: 013 766 4614

E-mail: wtbmhlanga@mpg.gov.za

Directorate: Tourism Development

- Develop tourism related policies, strategies and legislation
- Support local municipalities to develop tourism plans, strategies and programmes
- Facilitate community participation in the tourism sector

For more information Contact:

Tel: 013 766 4582

Fax: 013 766 4614

E-mail: jdmdluli@mpg.gov.za

Directorate: Sector Development

Service Offerings:

- Establish and support Industrial Development hubs.

For more information Contact:

Tel: 013 766 4534 / 4462

Fax: 013 766 4614

E-mail: gbngwenya@mpg.gov.za /
prunkosi@mpg.gov.za

BUSINESS REGULATIONS & GOVERNANCE

Directorate: Consumer Protection

Service Offerings:

- Protection from unfair business practices,
- Information on Consumer rights and responsibilities
- Consumer advice.
- Handles consumer Complaints
- Has a Consumer Court that adjudicates on consumer cases to ensure redress.

How To Lodge your complaint

Complain to the branch manager or customer care office of the business concerned before asking the Consumer Protection Office to intervene. The office has trained staff (investigators) to help resolve your complaint and advise you on your rights as a consumer.

Ways of Complaining

• In Person

Put your complaint in writing so that you can hand it over to the person you spoke to.

• Telephone complaints

First find out if there is a toll-free helpline you can call. If not, call the head office and ask to speak to the person in charge of consumer complaints or customer service

• Complaint by letter

Address the letter to the managing director or chief executive officer.

For more information contact:

- Ermelo: 017 8114830
- Nkangala: 013 947 2240
- Bushbuckridge: 013 799 1477
- Witbank: 013 690 2595
- Nelspruit: 013 752 3761

Directorate: Business Regulation

Service Offerings:

- Regulate gambling and betting activities in the Province (Mpumalanga Gambling Board)
- Implement business licensing and trading hours legislation (Liquor Affairs)
- Create awareness on the effects of liquor and gambling (Consumer Education)

For more information contact:

Tel: 013 766 4581 / 4584

Fax: 013 766 4614

E-mail: asebastian@mpg.gov.za /
momabelane@mpg.gov.za



ECONOMIC PLANNING

Directorate: Policy and Planning

Service Offerings:

- Analyse and review economic policies
- Develop and review sector strategies
- Develop sector plans

For more information Contact:

Tel: 013 766 4532
Fax: 013 766 9119
E-mail: nathin@mpg.gov.za

Directorate: Research and Development

Service Offerings:

- Conduct and commission research on the provincial economy.
- Develop and implement the Provincial EIE Cluster's research agenda
- Conduct and coordinate quality economic research to support and inform the development and the implementation economic strategies and plans in the Province.
- Analyse the implications of the global and national economic developments on the provincial economy

For more information Contact:

Tel: 013 766 4245 / 4168
Fax: 013 766 4610
E-mail: namphathele@mpg.gov.za

Directorate: Knowledge Management

Service Offerings:

- Provide data, information and intelligence on the economy.

For more information Contact:

Tel: 013 766 4148 / 4215
Fax: 013 766 4614
E-mail: mkgaka@mpg.gov.za

Directorate: Monitoring and Evaluation

Service Offerings:

- Develop and implement economic monitoring and evaluation framework in the Province
- Conduct and coordinate quality economic analysis to monitor and evaluate the implementation and the impact Provincial economic strategies and programmes
- Track the performance of the provincial economy against the set targets

For more information Contact:

Tel: 013 766 4331 / 4340
Fax: 013 766 4622
E-mail: mhlengam@mpg.gov.za



ENVIRONMENTAL SERVICES

Directorate: Environmental Impact and Management

Service Offerings:

- Comment on mine applications.
- Authorise EIA applications within legislated timeframes

For more information Contact:

Tel: 082 7717 998
Fax: 013 759 4614
E-mail: gbatchelor@mpg.gov.za

Directorate: Pollution & Waste Management

Service Offerings:

- Process waste and pollution applications in the province
- Review atmospheric pollution prevention Act permits
- Evaluate Environmental Authorisations applications
- Issue waste licenses
- Produce reports on integrated pollution control model in municipalities
- Develop air quality management plans

For more information Contact:

Tel: 013 759 4104 / 3761
Fax: 013 759 4614
E-mail: mctheledi@mpg.gov.za

Directorate: Environmental Awareness and Education

Service Offerings:

- Provide environmental information and capacity building.

For more information Contact:

Tel: 013 759 4105
Fax: 013 759 4614
E-mail: adelange@mpg.gov.za

Directorate: Strategic Environmental Management

Service Offerings:

- Provide strategic environmental management

For more information Contact:

Tel: 013 759 4187
Fax: 013 759 4164
E-mail: GCowden@mpg.gov.za

Directorate: Environmental Compliance and Enforcement

Service Offerings:

- Ensure compliance with environmental legislation, policies and guidelines

For more information Contact:

Tel: 013 759 4104
Fax: 086 512 6953
E-mail: PNNtuli@mpg.gov.za

District Offices

Nkangala District Manager:

Mr Sarel Mtsweni
Kwa-Mhlanga Government Complex
Building 2, first floor
Tel: 013 947 2240

Witbank office
Pavillion Building
21 Botha Avenue
Tel: 013 690 2595

Ehlanzeni District Manager:

Mr Wilson Makaringe
66 Anderson Street
Tel: 013 752 3761

Bushbuckridge office

Protea Centre, R40 road
Tel: 013 799 1477

Gert Sibande District Manager:

Mr Patrick Khumalo
Ermelo
Cell: 082 378 7252

Amsterdam Environmental Centre

Provide environmental information and capacity building

Service offerings:

- Adult group accommodation
- Youth group accommodation
- Conference facilities
- meals or cooking facilities
- Day visits programme

Tel: 017 846 9235

Fax: 017 846 9623

E-mail: makhabaneps@vodamail.co.za

Barberton Environmental Centre

Provide environmental information and capacity building

Service offerings

- Adult group accommodation
- Youth group accommodation
- Conference facilities
- Meals or cooking facilities
- Day visits programme
- Swimming pool

Tel: 013 712 3109

Fax: 013 712 3193

E-mail: benviro@telkomsa.net

Belfast Environmental Centre

Provide environmental information and capacity building

Service offerings:

- Day visits programme

Tel: 013 253 1216

Fax: 013 253 0622

E-mail: sjjdl@gmail.com

Delmas Environmental Centre

Provide environmental information and capacity building

Service offerings:

- Adult group accommodation
- Youth group accommodation
- Conference facilities
- Meals or cooking facilities
- Day visits programme
- Swimming pool

Tel: 013 665 8935/4

Fax: 013 665 8936

E-mail: delmasec@telkomsa.net

Elukwatini Environmental Centre

Provide environmental information and capacity building

Service offerings:

- Adult group accommodation
- Youth group accommodation
- Conference facilities
- Meals or cooking facilities
- Day visits programme

Tel: 017 883 0984

Fax: 017883 0985

E-mail: mpho409@gmail.com

Ermelo Environmental Centre

Provide environmental information and capacity building

Service offerings:

- Day visits programme

Tel: 017811 4380

Fax: 017811 4380 Ext 127

E-mail: mtnloaded.co.za

Graskop Environmental Centre

Provide environmental information and capacity building

Service offerings:

- Adult group accommodation
- Youth group accommodation
- Conference facilities
- Meals or cooking facilities
- Day visits programme

Tel: 013 767 2102/3

Fax: 013 767 2104

E-mail: genviro@telkomsa.net

KwaMhlanga Environmental Centre

Provide environmental information and capacity building

Service offerings:

- Conference facilities
- Day visits programme

Tel: 013 947 2710

Fax: 013 947 2726

E-mail: ratheleles@gmail.com

Lydenburg Environmental Centre

Provide environmental information and capacity building

Service offerings:

- Day visits programme

Tel: 013 235 2641

Fax: 013 235 2641

E-mail: lenviro@telkomsa.net

Mdala Environmental Centre

Provide environmental information and capacity building

Service offerings:

- Adult group accommodation
- Youth group accommodation
- Conference facilities
- Meals or cooking facilities
- Day visits programme

Tel: 082 657 8884

E-mail: linahdud@vodamail.co.za

Mkhuhlu Environmental Centre

Provide environmental information and capacity building

Service offerings:

- Day visits programme

Tel: 082 064 2274

Fax: 013 767 2104

E-mail: rebeccamabaso@gmail.com

Nelspruit Environmental Centre

Provide environmental information and capacity building

Service offerings:

- Day visits programme

Tel: 084 5562 244

E-mail: bpmidipane@mpg.gov.za

Pilgrim's Rest Environmental Centre

Provide environmental information and capacity building

Service offerings:

- Adult group accommodation
- Youth group accommodation
- Conference facilities
- Meals or cooking facilities
- Day visits programme
- Swimming pool

Tel: 013 768 1201

Fax: 013 768 1144

E-mail: nsmith@mpg.gov.za

Secunda Environmental Centre

Provide environmental information and capacity building

Service offerings:

- Day visits programme

Tel: 017 689 2019

Fax: 017 689 2019

E-mail: makam.np@vodamail.co.za

Tonga Environmental Centre

Provide environmental information and capacity building

Service offerings:

- Day visits programme

Tel: 013 780 7494

Fax: 086 6939 300

E-mail: tenviro@telkomsa.net

Volkruis Environmental Centre

Provide environmental information and capacity building

Service offerings:

- Day visits programme

Tel: 017 735 5184

Fax: 017 735 1682

E-mail: fmp@vodamail.co.za

Witbank Environmental Centre

Provide environmental information and capacity building

Service offerings:

- Day visits programme

Tel: 013 690 2595

Fax: 013 690 3704

E-mail: pmmabena@mpg.gov.za

For any other information please visit:

www.mpumalanga.gov.za/dedet



THE LIQUOR BOARD

Service Offerings:

- The key responsibility of the Liquor Board is to consider applications for liquor licences in terms of the Liquor Act (Act 27) of 1989.

In terms of Section 6 of the said Act, the Liquor Board is tasked with the responsibility to

"Advise the Minister or furnish a report or recommendation to the Minister on any matter referred to the Board by the Minister for consideration arising from the application of the Act or relating to the distribution or control over the distribution of liquor and to perform such other functions as may be assigned to it in terms of this Act."

- Apart from the issuing of liquor licences the Board conducts hearings relating to contraventions of the Liquor Act and other conditions attached to the liquor licence. The Board is in terms of Section 15(b)(i) empowered to revoke, suspend and or amend the conditions under which the liquor licence was issued.

- The Compliance and Enforcement unit of the Board ensures that licence holders comply with the liquor regulation legislation. Liquor Trade inspectors are responsible for conducting inspections at new/proposed liquor premises before the licence is issued to ensure that the premises is suitable for the type of licence issued and ready to go into business.

Compliance inspections are also conducted at licensed premises to ensure that licence holders comply with the provisions of the Act. Those who are found to be in contravention of the Act are referred to the Prosecutor of the Liquor Board for further handling.

For more information Contact:

Chairperson

Mr. JS Matsane: 082 436 5134 / 013 752 3761

Secretary

NS Gama: 082 782 5634 / 013 752 3761



CONSUMER AFFAIRS COURT

The Consumer Affairs Court is established in terms of Section 13 of the Mpumalanga Consumer Affairs Act, Act No.6 of 1998

Service Offerings:

- Its functions and powers are to adjudicate on matters of unfair business practices referred to it by the Consumer Protector.
- The process of initiating proceedings before the Consumer Affairs Court is by way of issuing summons to the respondent business/supplier which are served through the office.
- Any party affected is entitled to his own representation either by attorney or advocate whilst the consumer is represented by the Consumer Protector.
- Proceedings before the Court are open to the public. The court has its sittings in the Nelspruit Magistrates Court at Ehlanzeni Region on Thursdays and at Bethal Magistrates Court at Gert Sibande Region.

For more information Contact:

Tel: 013 752 3761 / 3774 / 3746

Fax: 013 752 3729 / 766 9401



NATIONAL CONSUMER COMMISSION

The NCC was established as an organ of the state within the public administration but as an institution outside the public service in terms of sect 85 of the Consumer Protection Act, No. 68 of 2008.

Service Offerings:

- Their function is to investigate alleged contravention s of the Act, administer and enforce the Act. It has jurisdiction throughout the republic

For more information Contact:

0860 0266 786

Fax: 0861 515 5229

Email: Nnetshitomboni@thencc.co.za



THE NATIONAL CREDIT REGULATOR

Service Offerings:

The National Credit Act requires the Regulator to

- Carry out education, research, policy development and registration of industry participants,
- Investigate complaints, and ensure the enforcement of the Act.
- Promote the development of an accessible credit market, particularly to address the needs of historically disadvantaged persons, low income persons, and remote, isolated or low density communities.
- Register credit providers, credit bureaux and debt counsellors

For more information Contact:

Tel: 0860 627 627 / 011 554 2600

E-mail: complaints@ncr.org.za

www.ncr.org.za



MPUMALANGA ECONOMIC GROWTH AGENCY

Service Offerings:

Financial support

- Seasonal loans
- Business loans
- Revolving Credit Facility
- Agricultural Enterprise Acquisition Scheme.
- Small Equipment/Technology loans
- Production Support
- Facilitation of technical training
- Facilitation of technical advice



Enterprise Development support

- Market facilitation
- Development of new business opportunities
- Product packaging and branding
- Product market information dissemination
- Management Support
- Business counselling
- Facilitation of business training
- Project management support (for infra-structure loans clients)

For more information contact:

Head Office: 33 Van Rensburg Street, Nelspruit 1200, Mpumalanga South Africa

P.O.Box 5838, Nelspruit 1200,

Mpumalanga South Africa

Tel: 013 752 2440

Fax: 013 752 2468

Nkangala Region - Tel: 013 656 3231

Gert Sibande Region - Tel: 017 634 8458

www.mega.gov.za



MPUMALANGA TOURISM AND PARKS AGENCY

Vision

Mpumalanga a world-class tourism and wildlife economy

Mission

Grow tourism and manage bio-diversity to stimulate sustainable economic growth that is inclusive and creates decent employment

Service Offerings

- Management and conservation of bio-diversity and eco-systems within the Province;
- Management of MTPA protected areas;
- Development and marketing of tourism to the Province;
- Promotion and creation of socio-economic growth and transformation within the tourism and conservation industry in the Province.

For more information contact:

Tel: +27 (0)13 759 5300/01

Fax: +27 (0)13 755 3928

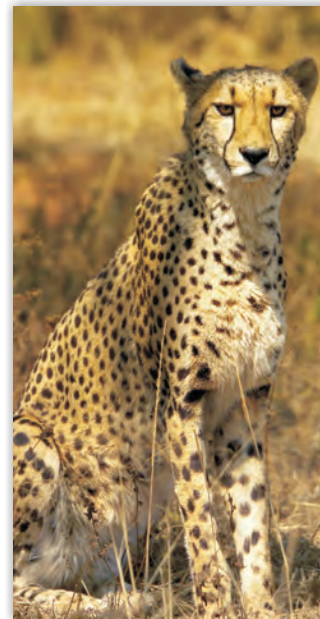
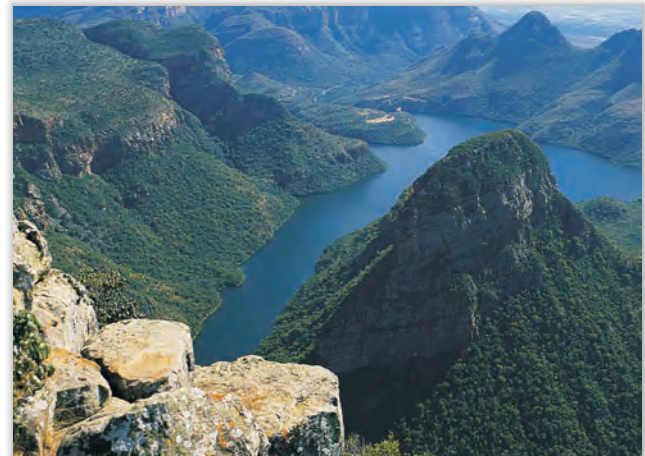
E-mail: info@mtpa.co.za

www.mtpa.org.za

Private Bag x 11338

Nelspruit

1200



MPUMALANGA GAMBLING BOARD

Vision

To be at the forefront of effective regulation of the gambling industry.

Mission

To ensure the integrity of gambling through efficient regulation of licensed gambling establishments within the Mpumalanga Province of South Africa.

Service offerings

- Serves as a gate keeper into gambling industry and grant gambling licenses subject to the provisions of the Act. (Mpumalanga Gambling Act)
- Ensures that gambling is conducted in compliance with the Mpumalanga Gambling legislation and in an honest and fair manner.
- Conducts audits, verifies completeness and accuracy of levels of taxes, evaluates systems controls and continues financial suitability of licensees.
- Educates and creates public awareness of the role of the MGB as a regulator of gambling.

For more information contact:

Tel: +27 (0) 13 750 8000

Fax: +27 (0) 13 750 8099

Private Bag x9908

White River

1240

www.mgb.org.za

Toll – free helpline 0800 006 008 - National Responsible Gambling Programme (NRGP)



INDUSTRIAL DEVELOPMENT CORPORATIONS

Service Offerings

We provide finance for industrial development projects, playing a catalytic role in promoting partnerships across industries within and outside our borders, promoting regional economic growth.

Who should apply for finance?

Our target beneficiaries are previously disadvantaged groups, including women, people with disabilities, low income worker groupings and marginalised communities.

We support projects that will eventually contribute to the development of the economy through:

- Job creation;
- Developing small and medium enterprises;
- Developing rural areas and underdeveloped provinces and regions; and
- Boosting Broad-based Black Economic Empowerment and empowering people who were previously excluded from participating in the economy.

The funds we currently manage are:

- Gro-E Scheme;
- Risk Capital Facility Programme;
- Support Programme for Industrial Innovation; and
- Transformation and Entrepreneurship Scheme.
- Green Energy Efficiency Fund
- Women Entrepreneurial Fund
- Distressed Fund

Funding criteria

Projects must show economic viability and financial sustainability; must fit into the IDC's mandated sectors; must meet the empowerment limits set by the particular fund; and should not be less than R1-million.

For more information contact:

Tel: 013 752 7724
Fax: 013 752 8139

Physical Address
Upper Level, Nelcity Building, c/o Samora
Machel and Paul Kruger Street
PO Box 3740
Mbombela
1200

www.idc.co.za



SMALL ENTERPRISE FINANCE AGENCY

Small Enterprise Finance Agency

Merger between Khula and South African Micro-Finance Apex Fund

Purpose

To provide finance to the SMME sector

Financial Products:

Revolving loan

To facilitate short term capital requirements or bridging finance for delivery of contracts or orders

Bridging loan

For businesses that have orders or tenders but do not have sufficient capital to fulfill the tender or order

Asset finance

For acquisition of fixed assets

Terms loans

To finance longer term business expansion requirements and specific capital acquisitions

Working capital

To finance purchase of stock, overheads, etc

Guarantees

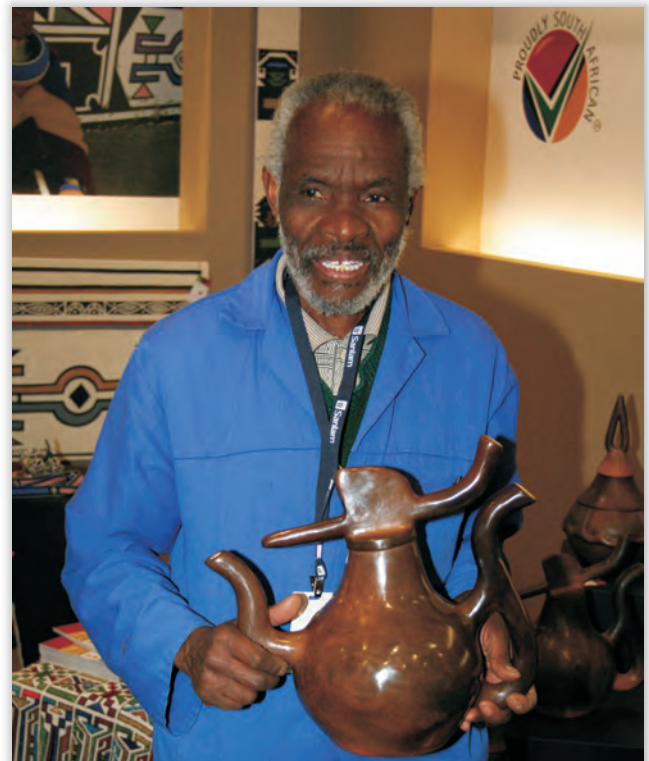
To provide various type guarantees such as performance, supplier, loan payment facility guarantees, etc.

Key Focus Areas

Businesses registered in South Africa, across all sectors of the economy except for the exclusions listed below:

- Tobacco, liquor, gambling, sex trade
- Armaments
- Speculative real estate
- Leveraged buy-out funds:
 - Hedging

- Borrowings
- Ventures inconsistent with the mandate of SEFA
- Loans to partners, the fund managers, their employees and affiliates, except for members of FSCs
- Any business involved in illegal trade
- Any business whose trade or operations may prejudice the reputation and good standing of SEFA
- Any political organisation
- People under debt review
- Any business having directors (or equivalent) who are un-rehabilitated insolvents individuals
- Technically insolvent businesses and individuals



Funding Model

Wholesale SME business loans (partnering with non-bank financial intermediaries (FIs) that provide specialised financing solutions to Small and Medium-sized businesses)

- Loans to be flexible and structured to meet the financing needs of the FIs
- Various self-liquidating equity instruments may also be considered as part of the investment strategy into the FI.
- The transactional limit for first time borrowers will be R50 million with a counterparty limit of R100 million.
- Securities for the loan may include the first cession of the loan book, power of attorney over bank accounts, mortgage bond over property, guarantees from third parties, and personal surety ships from directors.

Wholesale micro finance business loans (partnering with FIs and Financial Services Co-operatives (FSCs) that provide financing solutions to Micro and Survivalist businesses for the purpose of growing their income and asset base)

- SEFA to provide Wholesale Microfinance facilities to FIs and FSCs to on-lend to micro and survivalist clients and members respectively requiring funding of up to R100 000.

For more information contact:

Call Centre: 08600 54 852

Contact Person: Willie Fourie Acting Managing Director: SEFA



NATIONAL YOUTH DEVELOPMENT AGENCY

Service Offerings:

SME Funding

Enterprise Finance aims to promote entrepreneurship among young people, so it provides funding to youth aged 18-35 years old to help them start a new business or grow an existing one. To achieve this Enterprise Finance provides finance ranging from R100 000 to R5 000 000.

Micro-finance

One of micro-finance's biggest aims is to promote entrepreneurship among young people, so it provides loans ranging from R1000 to R100 000 to youth aged 18-35 years

Business Consulting Services Voucher Programme (BCSVP)

These are services designed to help youth-owned business set up, expand or develop their businesses.

Business Opportunity Support Services (BOSS)

Database for youth-owned businesses and procurers to register and search for business and procurement opportunities.

Volunteer Enterprise Mentorship

Volunteer to become a business mentor or sign up to be mentored by a business person.

Youth Co-operatives Development 51% youth (14-35 years) and Minimum Five members

- South African citizen and permanent residence
- Potentially income-generating business and shows prospect for growth
- Registered co-operative or willing to register
- Acceptable credit record

For more information contact :

Nelspruit Full Service Branch

Tel: 013 752 4628

Fax: 013 756 0100

Physical Address:

Nedbank Centre, Shop No. 8, 30 Brown Street, Nelspruit, 1200

Secunda Full Service Branch

Tel: 017 631 9500 / 9501

Physical Address:

Shop no2, Game Park Centre, Horwood Street, Secunda, 2302

Postal Address:

P.O. Box 7068, Secunda, 2302

Emalahleni Full Service Branch

Telephone: 013 656 6534 / 5

Fax: 086 609 4260

Physical Address:

Office no. 22 & 23, ePH Medical Centre (old Cosmos Building), Ground Floor, Cnr Mandela & Hofmeyer Street, Witbank, 1035



NATIONAL EMPOWERMENT FUND

NEF is mandated to promote and facilitate black economic equality and transformation.

Through its Fund Management Division, the NEF provide funding to black entrepreneurs to support new and existing business ventures with start-up, franchising and expansion capital and with the acquisition of equity interests in existing business for transformation purposes.

Service offerings

The Imbewu Fund

- Entrepreneurship Finance
- Procurement Finance
- Franchise Finance
- Rural and Community Development Projects

The Corporate Fund

- Acquisition Finance
- Project Finance
- Expansion Capital
- Strategic Projects Finance

Non-Financial Business Support

- Pre-Investments Business Support Unit
- Post-Investments Business Support Unit
- Legal Services unit

For more information contact:

Call centre: 086 163 3835

Tel: +27 11 305 8000

Fax: +27 11 305 8001 / 013 754 9860

E-mail: info@nefcorp.co.za / qokoseb@nefcorp.co.za

16 Brander Street Nelspruit, 1200

www.nefcorp.co.za



SMALL ENTERPRISE DEVELOPMENT AGENCY

Target Market

Approximately 20% of Seda's focus is on medium enterprise whilst 80% of its focus falls onto the small, micro (formal and informal) and co-operative enterprises. Seda has 42 branches, 9 provincial offices, 41 Enterprise Information Centres and 30 Technology Incubators spread across the country.

Seda offerings

Branches provide offerings that assist business in various phases of their life cycle:

Seda Business Talk

Offerings focus on clients who want information on starting a business

Seda Business Start

Provides tools and techniques for clients who are ready to start a business and want assistance and direction

Seda Business Build

Focusing on clients who want skills to sustain and strengthen their businesses

Seda Business Grow

Offerings focusing on clients who want to grow the businesses and expand nationally and internationally

For more information contact:

Bushbuckridge

Tel: 013 799 1804

E-mail: dmonyela@seda.org.za

Ehlanzeni

Tel: 013 754 4380

E-mail: pmnisi@seda.org.za

Gert Sibande

Tel: 017 634 4339

E-mail: wmakgai@seda.org.za

Nkangala

Tel: 013 655 6970

E-mail: dmonyela@seda.org.za

Nkomazi

Tel: 013 790 1183

E-mail: ajambane@seda.org.za

www.seda.org.za



THE JOBS FUND

The Jobs Fund is a R9 billion employment creation programme launched by the Minister of Finance in June 2011. It is an initiative of the government aimed at addressing the country's high rate of unemployment.

Managed by the DBSA, South Africa's state-owned development bank, the primary mandate of the Jobs Fund is to support initiatives that pilot innovative approaches to employment creation. It operates on the basis of a competitive process, allocating funds to projects that show promise and speak to the fundamental mandate of the Fund – i.e. sustainable job creation .

For more information and access to the online application form please visit the Jobs Fund website at

www.jobsfund.org.za

or

Call the Jobs Fund Call Centre on 086 100 3272



COMPANIES & INTELLECTUAL PROPERTY COMMISSION

Service Offerings:

- Registration of Companies, Co-operatives and Intellectual Property Rights (trade marks, patents, designs and copyright) and maintenance thereof
- Disclosure of Information on its business registers
- Promotion of education and awareness of Company and Intellectual Property Law
- Promotion of compliance with relevant legislation
- Efficient and effective enforcement of relevant legislation
- Monitoring compliance with and contraventions of financial reporting standards, and making recommendations thereto to Financial Reporting Standards Council (FRSC)
- Licensing of Business rescue practitioners
- Report, research and advise Minister on matters of national policy relating to company and intellectual property law



For more information contact:

Call Centre: 086 100 2472 (CIPC)
 Fax: 086 517 7224
 Email: info@cipc.co.za

Docex: 256 Pretoria

Postal Address: Companies
 P O Box 429
 Pretoria
 0001

Postal Address: Intellectual Property
 Private Bag x400
 Pretoria
 0001

Postal Address: Co-Operatives
 Private Bag x237
 Pretoria
 0001

Physical Address
 the dti Campus (Block F - Entfufukweni)
 77 Meintjies Street
 Sunnyside
 Pretoria

THE DEDET CONTACT DETAILS

Offices	Telephone Numbers	Physical Address
Head Office	Tel: 013 766 4004 Fax: 013 766 4614	No 7 Government Boulevard Nelspruit, 1200
Ehlanzeni regional Office	Tel: 013 766 4802	50 Murray Street Nelspruit
Bushbuckridge Office	Tel: 013 799 1477	R40 Main Road Protea Building
Gert Sibande Regional Office	Tel: 017 8114830	No 13 de Jager Street Ermelo, 2350
Witbank Office	Tel: 013 690 2595	Pavillion Building 21 Botha Avenue Witbank
Kwa –Mhlanga Government Complex	Tel: 013 9472240 Fax: 013 947 2544	Building 2, 1st Floor
66 Anderson Street	Tel: 013 752 3761	66 Anderson Street Nelspruit, 1200

[illegible]

[illegible]

NOTES

This image shows a single sheet of white paper with horizontal ruling lines. The lines are evenly spaced and run across the width of the page. There are no margins, text, or other markings on the paper.



the **dedet**

Department:
Economic Development, Environment and Tourism
MPUMALANGA PROVINCIAL GOVERNMENT

Building No 4, No 7 Government Boulevard
Riverside Park Ext 2, Nelspruit, 1201
www.mpumalanga.gov.za/dedet

Appreciation goes to all the stakeholders who supplied the relevant information

