



# OFFICE OF THE PREMIER IN MPUMALANGA

A Strategic centre of excellence

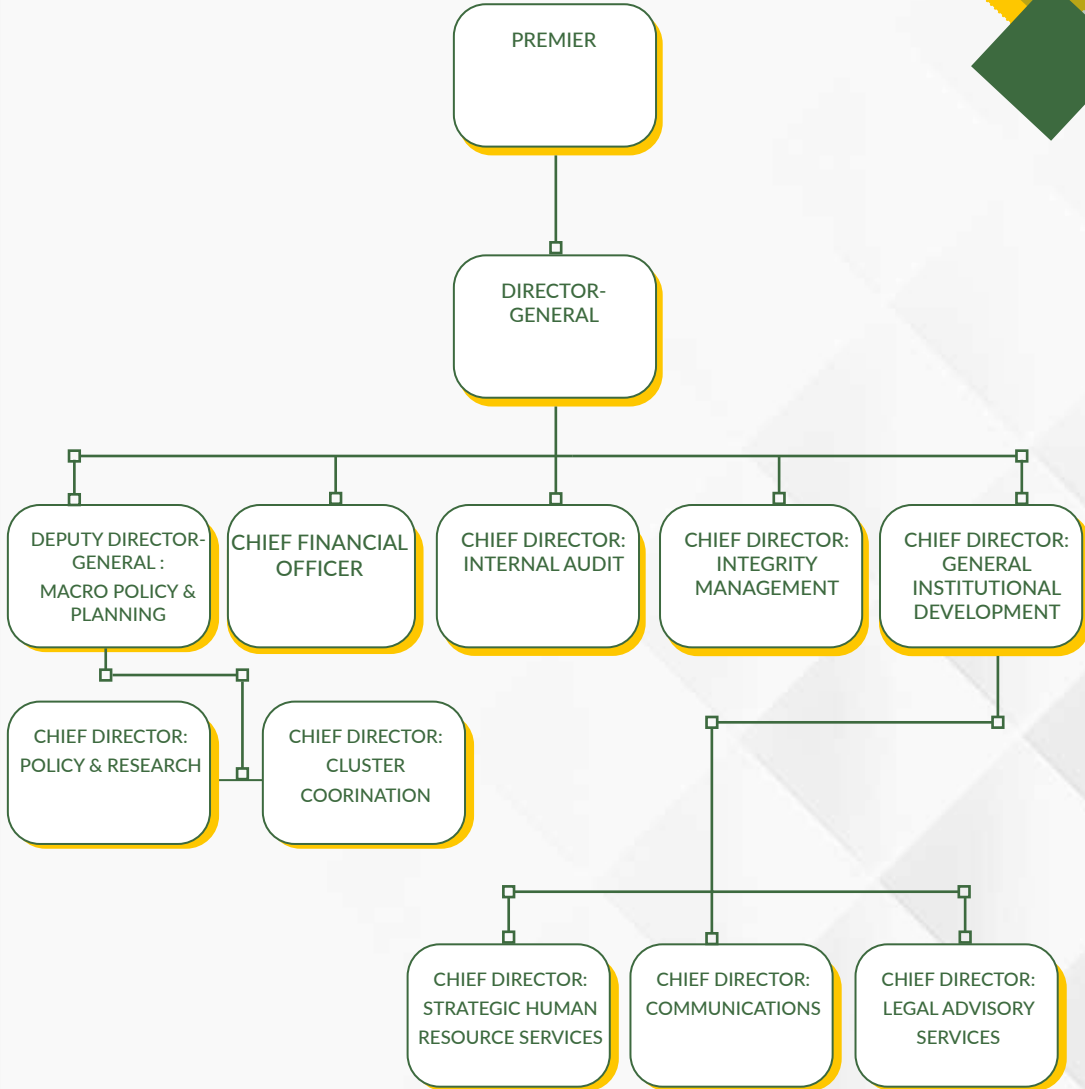


LET'S MOVE MPUMALANGA FORWARD



*Mr Makhukhu Mampuru:  
Director General Office of the Premier*

# ORGANISATIONAL STRUCTURE



# 1. PROGRAMME 1: ADMINISTRATION

## **Purpose:**

The Programme is responsible for the appropriate and effective coordination and monitoring of administrative and strategic matters, both within the OTP and the Province. It comprises of the Premier Support, Director-General Support, Executive Council Support and Financial Management.

## 1.1 Premier Support

This sub-programme provides programme management and coordination support, including the delivering the State of the Province Address (SoPA) as well as the Policy and Budget Speech.

## 1.2 Director-General Support

The sub-programme provides administrative leadership and directives through planning, reporting, auditing, security, integrity, ethics and forensic services.

## 1.3 Executive Council Support

The sub-programme is responsible for providing effective and efficient secretarial and administrative support services to Executive Council, EXCO Sub-Committees and intergovernmental structures, including coordination of EXCO resolutions.

## 1.4 Financial Management

The sub-programme provides financial management support and advisory services to ensure compliance with the Public Finance Management Act and Treasury Regulations. It is responsible for coordination and facilitation of the Audit Remedial Action Plan and financial delegations. The sub-programme's core responsibilities are expenditure and payroll management; preparation of financial statements and budget as well as supply chain management. Risk and Ethics Management also resides within the Financial Management sub programme.



*OTP entrenches the voice of the citizens in government through the Outreach and Premier's Imbizo programme.*

## 2. PROGRAMME 2: INSTITUTIONAL DEVELOPMENT

### **Purpose:**

To provide institutional development services, advice, strategic support, coordination and development of policies to ensure operational efficiency, alignment and corporate compliance to improve the capacity of the Mpumalanga Provincial Government to deliver effective and efficient services. The Programme is composed of Strategic Human Resources, Legal Advisory Services, Government Communications and Information Services and Provincial Government Information Technology Officer.

### 2.1 Sub-Programme: Strategic Human Resources

Coordinates and monitor the implementation of human resource practices and strategies by Departments in the Provincial Government.

### 2.2 Sub-Programme: Legal Advisory Services

Provides legal advisory services to the Mpumalanga Provincial Government and the Office of the Premier.

### 2.3 Sub-Programme: Government Communication and Information Services

Coordinates government communication and information services within the provincial government and the Office of the Premier.

### 2.4 The Provincial Government Information Technology Officer

Coordinates support for Information Communication Technology (ICT) across all Provincial Departments and the OTP, and promote the effective management of information and communication technology as a service delivery enabler and a strategic resource.

### 2.5 Public Service Transformation and Service Delivery Improvement

Coordinates and monitor the implementation of Batho Pele programmes (Africa Public Service Day, Project Khaedu, Customer Satisfaction Survey and Service Delivery Improvement Plans) as well as the revitalisation of the Batho Pele strategy in the OTP and Provincial Departments and Municipalities.

## 3. PROGRAMME 3: POLICY AND GOVERNANCE

### Purpose:

To provide effective macro policy advice, coordination and monitoring in the following key focus areas:

- Provincial Planning;
- Implementation of Provincial programmes;
- Mainstreaming of gender, youth and older persons' issues;
- Regional and International cooperation;
- Research and information management;
- Advisory services to the Premier, EXCO, EXCO committees and MPAC;
- Coordinate key strategic interventions to improve Departmental performance.

### 3.1 Provincial Policy Management

Enhances evidence-based decision-making processes by the EXCO through provision of integrated research, coordination, planning, monitoring and evaluation within the Province. It consists of the following Units:

### 3.2 International Relations



Facilitates the development and implementation of the Provincial International Relations Programme of Action and monitors progress thereof. It also facilitates International Relations partnerships and signing of MoUs to support Socio-Economic Development in the province.

*International Relations Unit coordinates bilateral engagements with foreign countries to advance trade relations.*

### 3.3 Research and Strategic Information Management

Implements the Provincial Research Agenda and facilitate the establishment of the Mpumalanga Research Institute (MRI) for research capacity and provide quality assurance on the research projects implemented.

### 3.4 Mpumalanga Provincial AIDS Council (MPAC)



Monitors the implementation of the Provincial Implementation Plan on HIV, (Sexually Transmitted Diseases (STDs) and Tuberculosis (TB) through the Mpumalanga Provincial AIDS Council (MPAC) sittings.

*Mpumalanga Provincial AIDS Council (MPAC) intensifies measures to prevent the spread of HIV/AIDS through multi-stakeholder approach.*

## 4. Sub-Programme: Cluster Coordination

The purpose of this programme is to support and improve the Executive Council decision making processes and promote policy coherence. Promote active collaboration with departments, municipalities and national Clusters to implement Government's Programme of Action.

### 4.1 Governance, State Capacity, Security, Crime Prevention and Institutional Development Cluster



The purpose of the cluster is to advance the capability needs of the state. It is designed to enhance the capacity of the state and governance issues. It is responsible to drive safety, security and crime prevention matters, building the capability of the state to play a developmental and transformative role. It coordinates a seamless interface between the spheres of government.

*Governance Cluster enhances state capacity to fight crime.*



## 4.2 Social Protection, Community and Human Development Cluster

The purpose of the cluster is to promote the advancement of social integration and inclusion in communities. It is responsible for driving the Social Transformation agenda, eradicate poverty and diminish people's exposure to risks. It is responsible for human development, which entails access to quality education, health and sustainable livelihoods. It is also responsible for broader transformation of human settlements, aligned to the ecosystem, social amenities and economic opportunities.



*Social Cluster promotes access to quality education.*

## 4.3 Economy Sector, Investment, Employment and Infrastructure Development Cluster

The purpose of the Sub-Programme is to grow the economy, investment opportunities, create an enabling environment for employment opportunities, management of social and economic infrastructure, Land agrarian & Food Security.



*Economic Cluster promotes land agrarian and food security.*

## 4.4 Special Programmes



*Special Programmes coordinates funding of youth enterprises and business support through the Mpumalanga Youth Development Fund.*

Coordinates and monitors the mainstreaming of target groups (women, youth, older persons and persons with disabilities and LGBTQIA+). Monitors the implementation of the Provincial Strategic Plan on Gender-Based Violence and Femicide (GBVF). It coordinates the implementation of the Mpumalanga Youth Development Fund (MYDF), and the implementation of Youth Empowerment Programmes in the province.

## 4.5 Macro Planning, Monitoring and Evaluation



*Completed Marite pedestrian bridge signifies the Provincial Infrastructure Plan coordinated by OTP.*

Providing guidance on the development or review of Provincial Sector Development Plans by Provincial Departments. i.e. Provincial Infrastructure Master Plan (MIMP) by the Department of Public Works, Roads and Transport (DPWRT) and the Provincial Food Nutrition and Security Plan by the Department of Social Development (DSD), etc.

# STRATEGIC OVERVIEW

## VISION

..... □  
A strategic centre of excellence

## MISSION

..... □  
We exist to:

- Provide strategic leadership;
- Provide support for institutional development;
- Coordinate government programmes through integrated research & development; information, planning, monitoring and evaluation
- Provide professional advice, through evidence-based decision-making support.

## VALUES

..... □  
The Office of the Premier is guided in executing its mandate by the following values:

- Reliability – service that is accurate, consistent, timeous and trustworthy;
- Resourcefulness – customised solutions to problems in delivering the services concerned;
- Accountability – we will be transparent and take responsibility in our decision-making; and
- Professionalism – to be duly skilled, conscientious, objective, ethical and compliant with all relevant prescripts in performing our duties.



## PUBLISHERS

### OFFICE OF THE PREMIER MPUMALANGA

Makhonjwa Building,  
No. 7 Government Boulevard,  
Riverside Park Ext 2, Mbombela, 1201,  
Mpumalanga Province,  
Private Bag X 11291, Mbombela, 1200

**Mpumalanga Youth Development Fund:**  
013 766 2108

**Information enquiry:** 013 766 2473

**Email:** info@mpg.gov.za,



@MpumalangaGov



Mpumalanga Provincial Government

## CODE OF CONDUCT:

Our aim remains to provide accurate, truthful and balanced reporting.

As a publication that subscribes to The Press Code of Ethics and Conduct for South African Print and Online Media, we are serious about reporting the news accurately and fairly.

## EDITORIAL TEAM:

**EDITOR:** Mr GP Mthethwa  
**PHOTOGRAPHER** Ms K Scrimnger  
**SENIOR DESIGNER:** Ms U Mbube

**Speak Out, Do not turn a blind  
eye on Gender Based Violence  
and Femicide (GBVF)**

*Together, we can achieve a violent free and safe society for all.*

**National Command Centre**  
**Toll Free Number: 0800 428 428**

Ms Refilwe Mtshweni-Tsipane  
Mpumalanga Premier